



OF-1

Simply the Best

The simple and straightforward way to build distributed solutions with multiple UI's

Session will cover:

- OF-1 at a glance
- Demonstration of integrated base solutions

Workflow Engine

Document Management System

DigiPen Integration

Enterprise Social Network

- Use cases and stories of success
- Summary



**Klaus
de Vries**



**Will
van Beek
(proWill)**



**Klaus
Erichsen**

OF-1 at a Glance

- Introduction
- Live presentation of basic functionality
- Summary



**Klaus
de Vries**



**Will
van Beek**

DMS and Workflow Engine

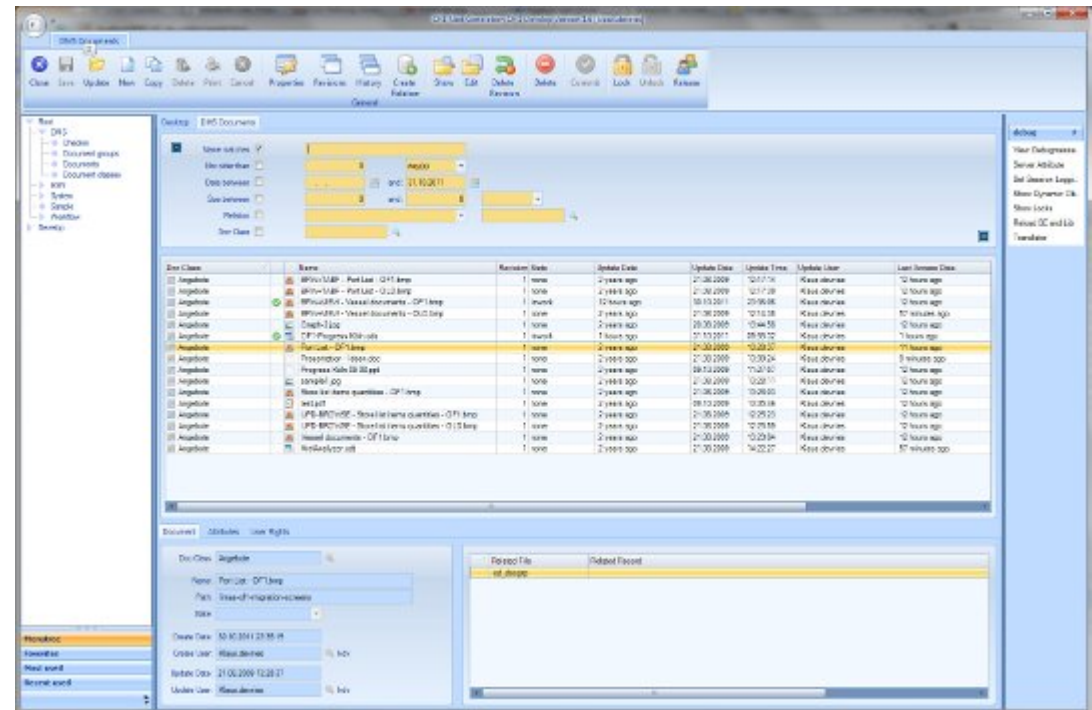
- **DMS- Documents Management System**
- **Workflow Engine**
- **Base Functionality**



**Klaus
de Vries**

DMS

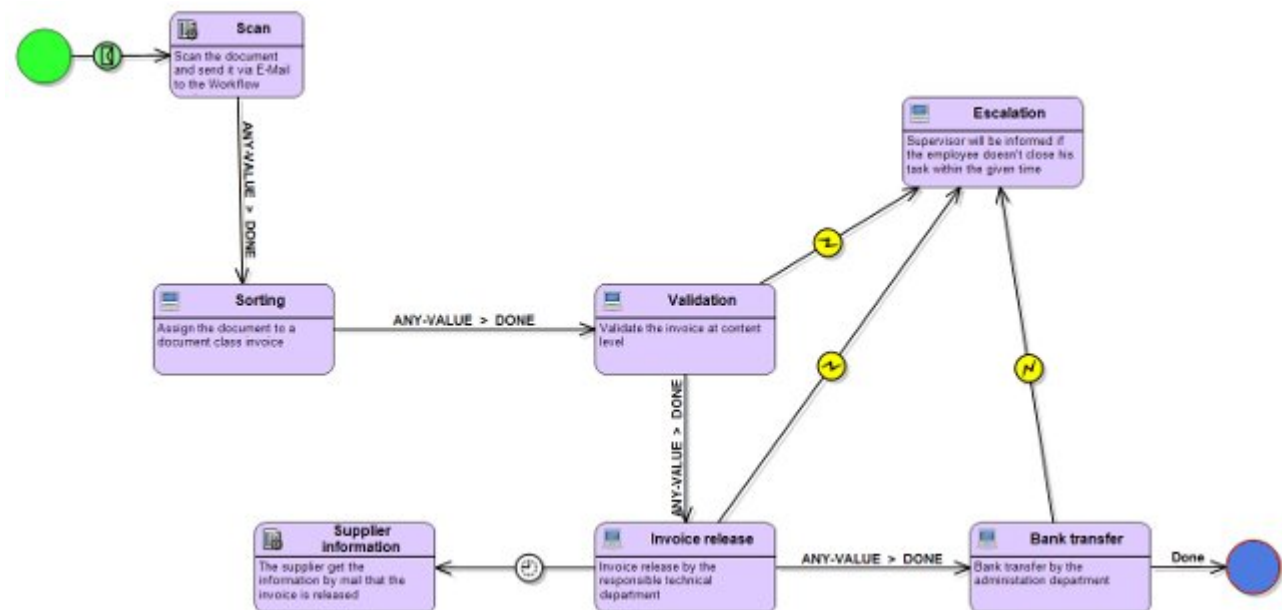
- Web based
- Easy to integrate
- Workflow Engine aware



Klaus de Vries

Workflow Engine

- Support Base Elements
- Samples
 - Document Mgmt
 - Blood Tests
 - Incoming Invoices
 - Hotline Calls
 - Ticket Systems



Klaus
de Vries

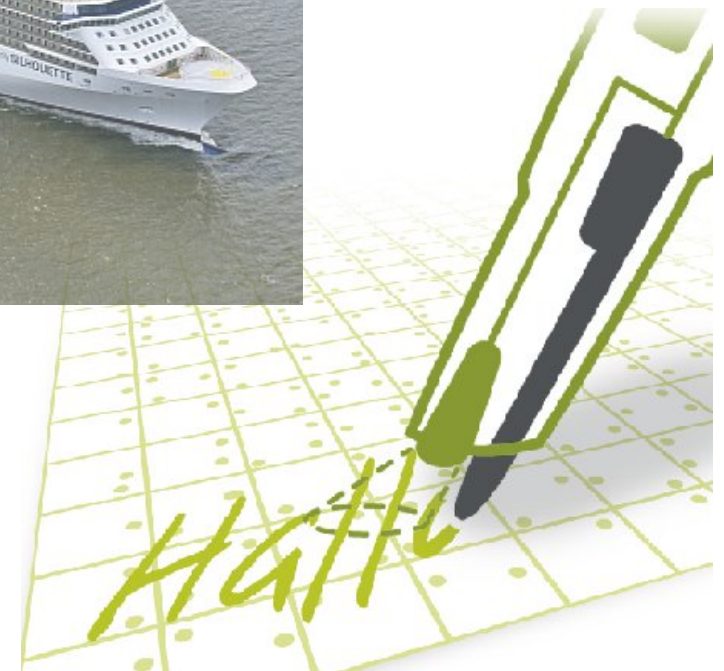


**Klaus
de Vries**

DigiPen

- Marry Paper and ERP
- Short process time
- Avoid media breaks

- Use cases
 - Quality control
 - Inventory
 - Check lists



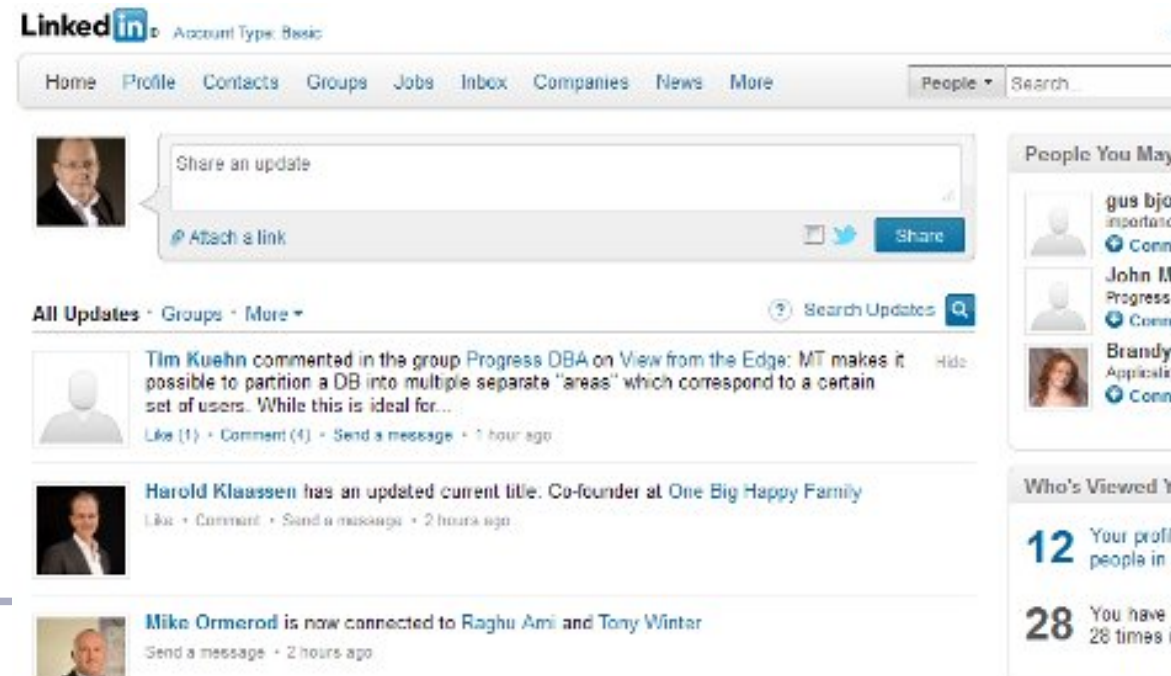
Klaus
de Vries



**Klaus
de Vries**

ESN

- Enterprise Social Network
 - Base Idea: „Company Social Network“
 - Events from your IT system and from your employees

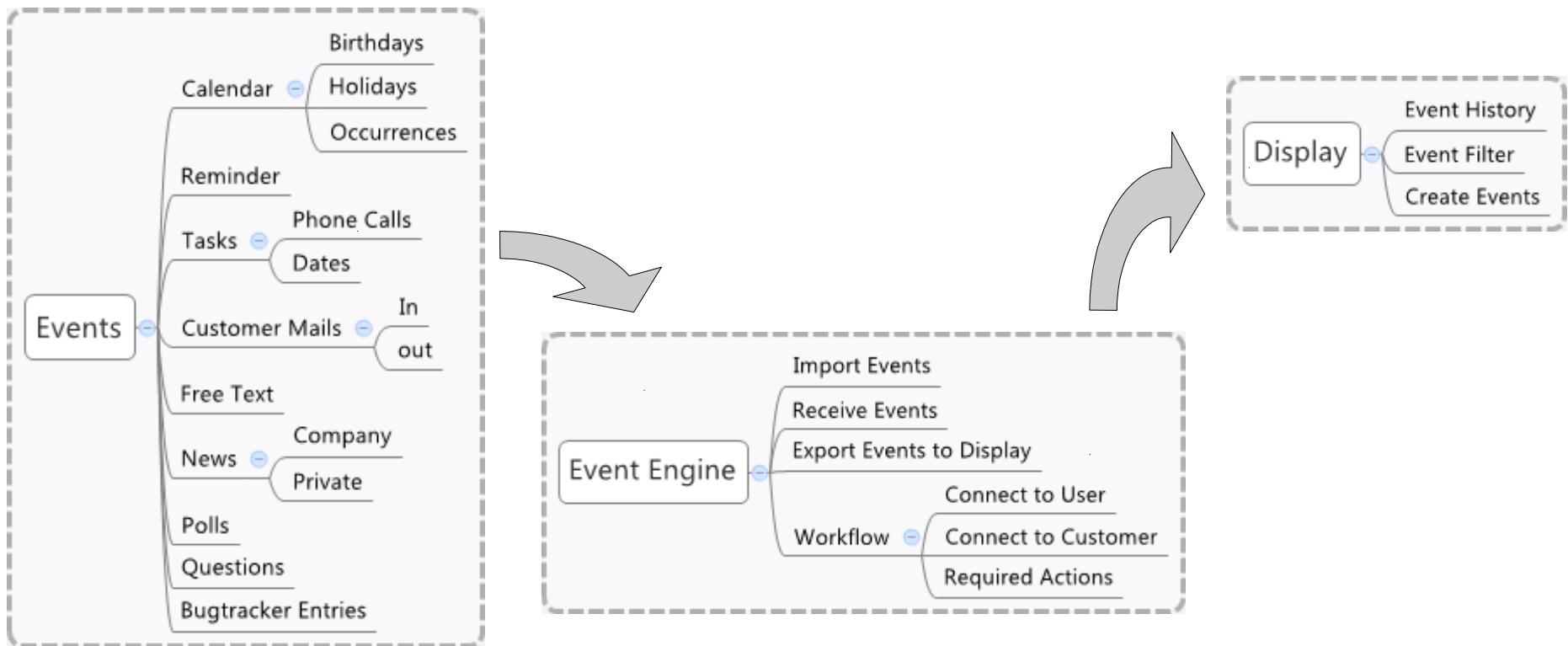


XING



Klaus Erichsen

ESN – Throughput



Klaus Erichsen



**Klaus
Erichsen**

Use Cases and Success Stories

- **Optimo** → **Increase Sales**
- **AVG** → **GUI against SAP**
- **Hapag Lloyd** → **Fast Migration**



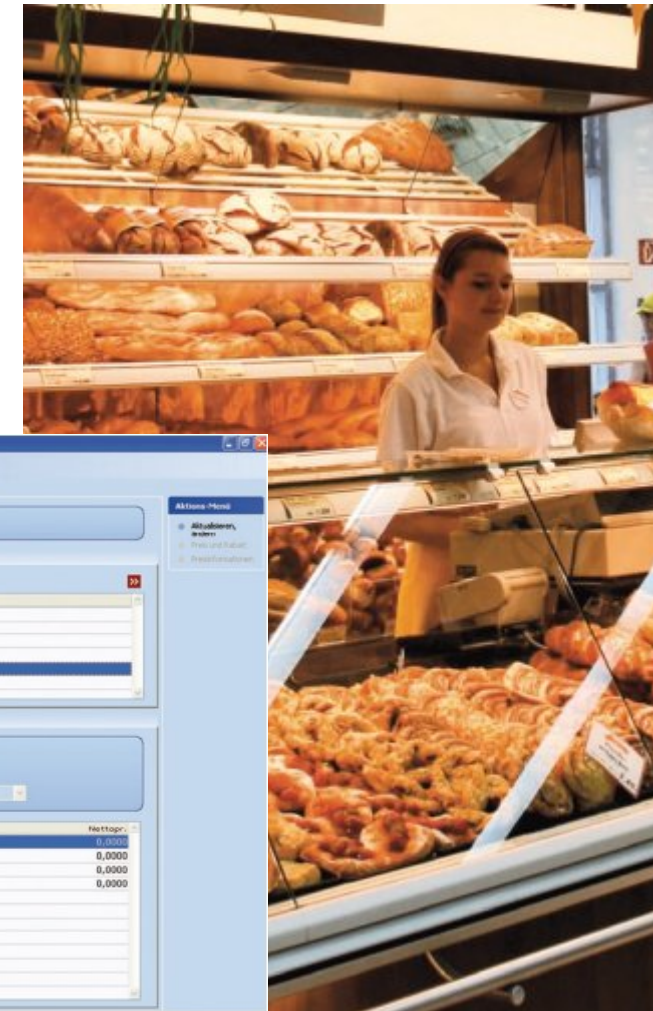
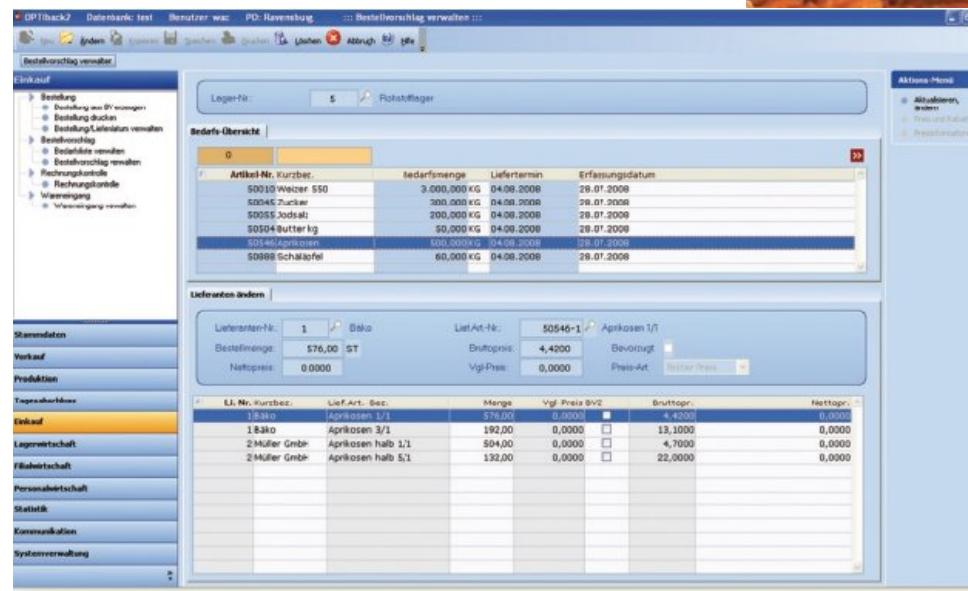
**Klaus
Erichsen**

Optimo – Increase Sales

- Baking Factories, Bakeries
- Recreated application
- Improved GUI
- Improved key support

→ More sales

OPTIback2
Die neue Generation von **OPTIback**®

Artikel-Nr.	Kurzbez.	Bedarfsmenge	Liefertermin	Erfassungsdatum
50010	Wasser 550	3,000,000 KG	04.08.2008	28.07.2008
50045	Zucker	200,000 KG	04.08.2008	28.07.2008
50055	Jodsalz	200,000 KG	04.08.2008	28.07.2008
50504	Butter kg	50,000 KG	04.08.2008	28.07.2008
50508	Schmalz	60,000 KG	04.08.2008	28.07.2008

LI. Nr.	Kurzbez.	Lief. Art.	Bsp.	Menge	Vgl. Preis B/V	Bruttogr.	Nettogr.
1	Bäko	Aprikosen 1/1		192,00	0,0000	19,1000	0,0000
2	Müller GmbH	Aprikosen halb 1/1		504,00	0,0000	4,7000	0,0000
2	Müller GmbH	Aprikosen halb 5,1		192,00	0,0000	22,0000	0,0000



Klaus
Erichsen

AVG – GUI against SAP

- Hospital Chain
 - Strong pro SAP Group
 - Create rich GUI
- Electronic Patient File



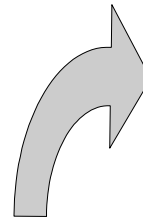
Klaus Erichsen

The screenshot displays the iMED (Eurocrank) software interface for patient Michael Mohr. The interface is divided into several sections:

- Top Bar:** Shows the patient's name "MOHR, Michael" and birth date "Geburtsdag: 20.03.1955 (55J)".
- Left Panel:** A "To Do" list and a tree view of medical orders and documents. The tree view includes categories like "Arztliche Befunde", "Diagnostik", and "Verlauf".
- Right Panel:** A detailed view of the patient's medical history, including a table of dates and events. The table has columns for dates (07/01/11, 07/01/11, 07/01/11, 07/01/11) and rows for various medical events like "Datum", "Uhrzeit", "Ergebnis", "Befund", "N3 Stöhen", etc.
- Bottom Panel:** A table of laboratory results (Laboratordaten) with columns for "Einheit", "Normbereich", and "Werte". The table includes rows for "Elektrolyte", "Gerinnung", and "HämatoLOGIE".

Hapag Lloyd – Fast Migration

- Large Shipping Company
 - Sources used includes strongly
 - Migrated to OF-1
- Migration: 25% of build time



Arrival Date	Time	Origin Port	Departure Date	Time	Port
16.01.2003	06:30	CHARLESTON, SC	18.01.2003	10:00	NEW YORK, NY
18.01.2003	00:00	NEW YORK, NY	19.01.2003	00:30	SOUTHAMPTON
25.01.2003	19:30	SOUTHAMPTON	26.01.2003	00:30	LE HAVRE
27.01.2003	07:00	LE HAVRE	27.01.2003	21:00	ROTTERDAM
28.01.2003	10:40	ROTTERDAM	29.01.2003	09:00	HAMBURG
30.01.2003	07:12	HAMBURG	31.01.2003	14:40	CHARLESTON, SC
08.02.2003	11:00	CHARLESTON, SC	11.02.2003	12:00	MIAMI, FL
11.02.2003	11:00	CHARLESTON, SC	14.02.2003	12:00	MIAMI, FL
14.02.2003	11:00	MIAMI, FL	15.02.2003	19:00	HOUSTON, TX
16.02.2003	11:10	HOUSTON, TX	17.02.2003	07:00	CHARLESTON, SC
20.02.2003	05:42	CHARLESTON, SC	25.02.2003	06:00	ROTTERDAM
26.02.2003	00:12	ROTTERDAM	07.03.2003	01:00	HAMBURG
07.03.2003	11:30	HAMBURG	20.03.2003	13:00	ROTTERDAM
21.03.2003	12:12	ROTTERDAM			

Arrival Date	Time	Arrival Port	Port	Time	Departure Date
02.01.2003	07:40	ROTTERDAM	HAMBURG	09:00	03.01.2003
03.01.2003	16:42	HAMBURG	SOUTHAMPTON	19:00	04.01.2003
05.01.2003	10:40	SOUTHAMPTON	NEW YORK, NY	00:30	06.01.2003
13.01.2003	06:30	NEW YORK, NY	NORFOLK, VA	22:30	13.01.2003
14.01.2003	16:42	NORFOLK, VA	CHARLESTON, SC	04:30	15.01.2003
16.01.2003	06:30	CHARLESTON, SC	NEW YORK, NY	19:00	18.01.2003
18.01.2003	00:30	NEW YORK, NY	SOUTHAMPTON	00:30	19.01.2003
25.01.2003	19:30	SOUTHAMPTON	LE HAVRE	20:30	26.01.2003
27.01.2003	07:00	LE HAVRE	ROTTERDAM	21:00	27.01.2003
28.01.2003	10:40	ROTTERDAM	HAMBURG	09:00	29.01.2003
30.01.2003	07:12	HAMBURG	CHARLESTON, SC	14:40	31.01.2003
08.02.2003	11:00	CHARLESTON, SC	CHARLESTON, SC	01:00	08.02.2003
09.02.2003	06:30	CHARLESTON, SC	MIAMI, FL	14:00	12.02.2003
13.02.2003	10:30	MIAMI, FL	HOUSTON, TX	12:30	14.02.2003



Klaus Erichsen





Summary



**Will
van Beek**



Questions?

- Please, do not leave!



**Klaus
de Vries**

**Will
van Beek
(proWill)**



**Klaus
Erichsen**